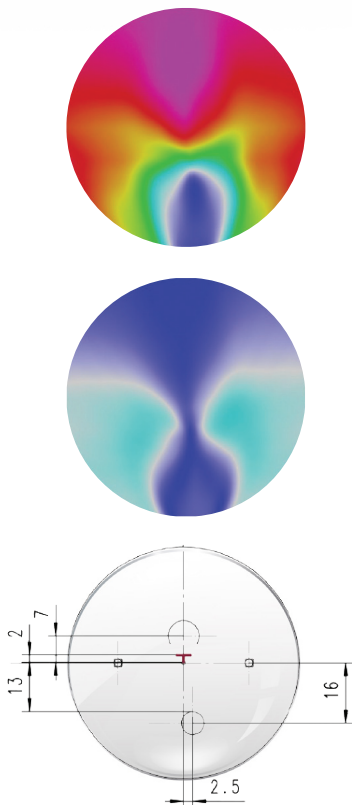


Solidar I-RELAX



Reduces Eye Strain
Ideal for Students

The Solidar I-Relax. If your patient spends extended time doing task specific activities such as reading, desk work or computer work, they may benefit from task specific glasses. "Mild Add" lenses are intended as a primary pair replacement for patients wearing single vision. They are recommended for 18 to 40 year-old myopes experiencing symptoms of eye fatigue. The benefits are a power boost to reduce eyestrain for close-up activities & greater comfort than standard vision correction lenses.



Design Characteristics

Corridor Length (CL)	13 mm
Fitting Height	18 mm
Inset/Variable	n/a
Decentration	n/a
Default Wrap	5°
Default Tilt	7°
Back Vertex	13 mm
Customize	Yes
Wrap Support	Yes
Atorical Optimization	Yes
Frame Selection	Yes
Max. Diameter	79 mm
Addition	0.50 - 0.75 dpt.
Application	Progressive Starters



You Won't Believe Your Eyes!™